

 **HERCULITE**®  
Powered by Innovation • Proven by Performance



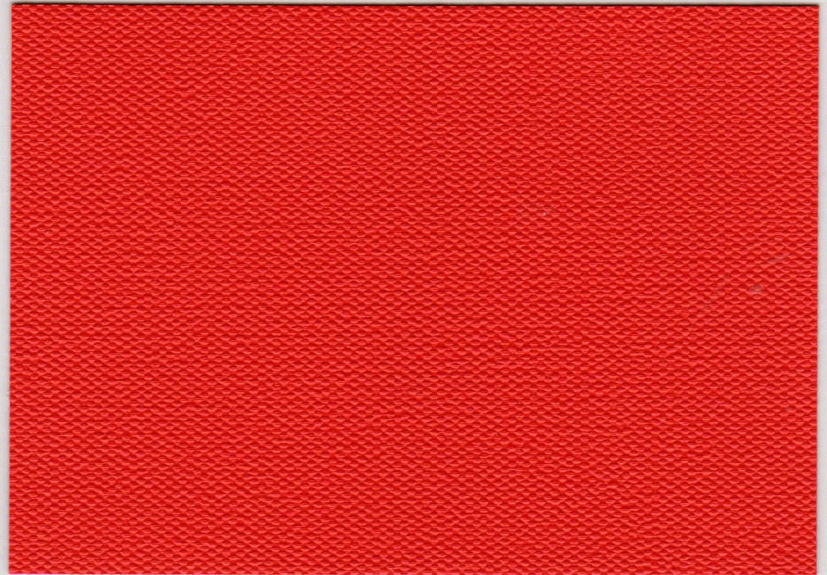
Architectural Shade Fabric

 **Weather-Chek**™

**Rain Kleen® Textured Surface  
Digitally Printable**



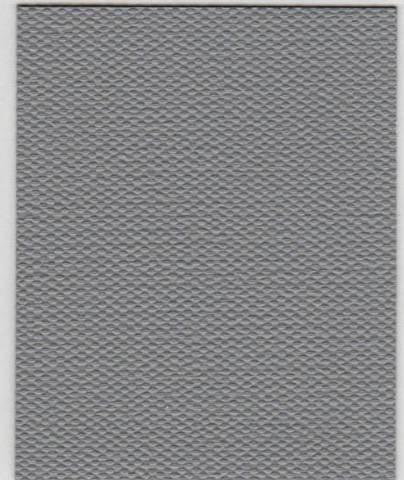
- Digital Ink Printing:  
Latex Digital  
Solvent Based  
UV Curable
- Fire Resistant
- Water Proof
- Heat Sealable
- Scratch Resistant
- Stain & Mildew Resistant
- Dimensionally Stable
- 10 Year Warranty
- Made in America



WC826 Deep Red



WC811 Glade Green



WC819 Driftwood

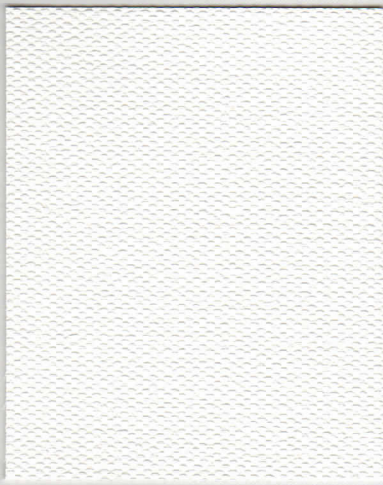
### Typical Properties

Weight (Sq. Yd.)	18 Oz. +/-10%
Width	62 in./1.57 meters
Roll Size	50 Yd.
Substrate Yarn	Polyester
Finish	Textured
Tensile Strength(lb.in)	W 240 / F 180
Tear Strength (lb.)	W 70 / F 60
Surface Treatment	RainKleen® Finish
Weldable	Dielectric/Thermal
Hydrostatic Burst (PSI)	350 PSI
Waterproof	Yes
Flame Retardant	CSFM Reg. Title 19 NFPA 701, ASTM E 84 Class A

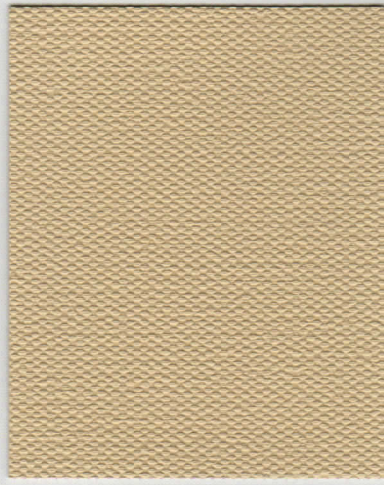
This information is offered for your general guidance and has been obtained by modern test methods. It is true and accurate to best of our knowledge at the time of printing.



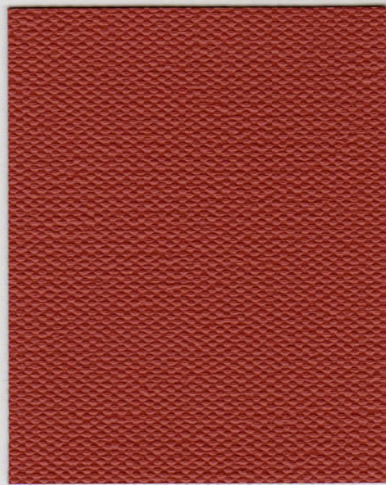
WC838 Tan



WC888 Designer White



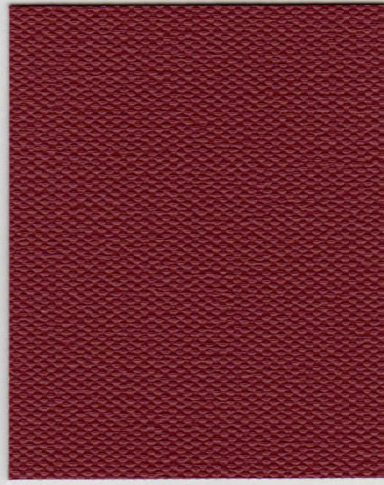
WC800 Sand



WC809 Rust



WC839 Ivory



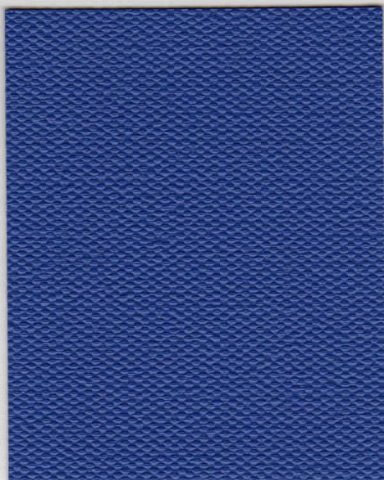
WC815 Burgundy



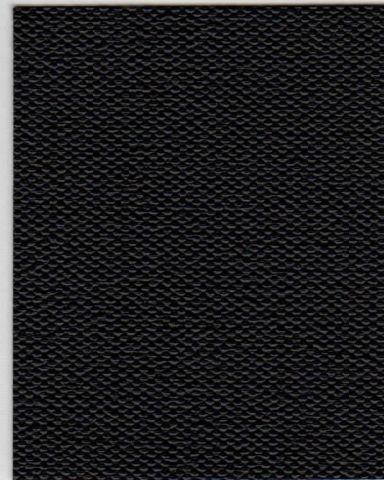
Weather-Chek™



WC812 Deep Sea Blue



WC846 Ocean Blue



WC845 Black



## Weather-Chek™

is a revolutionary architectural textile composite that incorporates specially engineered flexible polymer technology with a high performance polyester substrate. Made in America, Weather-Chek utilizes a unique hybrid construction that delivers exceptional tear and tensile strength blended with flexibility and softness. It is a unique technical textile that features the textured look of a woven textile and maintains the performance attributes and benefits of a commercial grade engineered thermoplastic.

## Weather-Chek™

is engineered to be easy to work with and handle. The fabric has a textured matte surface and can be assembled using standard welding processes. Additionally, Weather-Chek is made with a special proprietary PVC film formulation that resists scratching and eliminates installation related damage, to give the finished awning the best possible look and most favorable impact. Weather-Chek fabrics are top coated with Herculite's Rain Kleen®, a specially formulated and proprietary top coating system that helps prolong fabric life and preserve its color intensity. Weather-Chek is flame resistant and meets the requirements of the California State Fire Marshal (CSFM).

## Weather-Chek™

is made in America and is the ideal architectural shade fabric for awnings and canopies, poolside structures, car shelters, patio covers, walkway coverings, privacy screens, curtains and in-home decorative ceilings, awnings and drapes. It is engineered to protect people and furnishings from weather while maintaining a pleasing architectural fabric statement of sustainability.



P.O. Box 435, EMIGSVILLE, PA 17318 USA  
(800) 772-0036 (717) 764-1192 FAX (717) 764-5211  
[WWW.HERCULITE.COM](http://WWW.HERCULITE.COM)