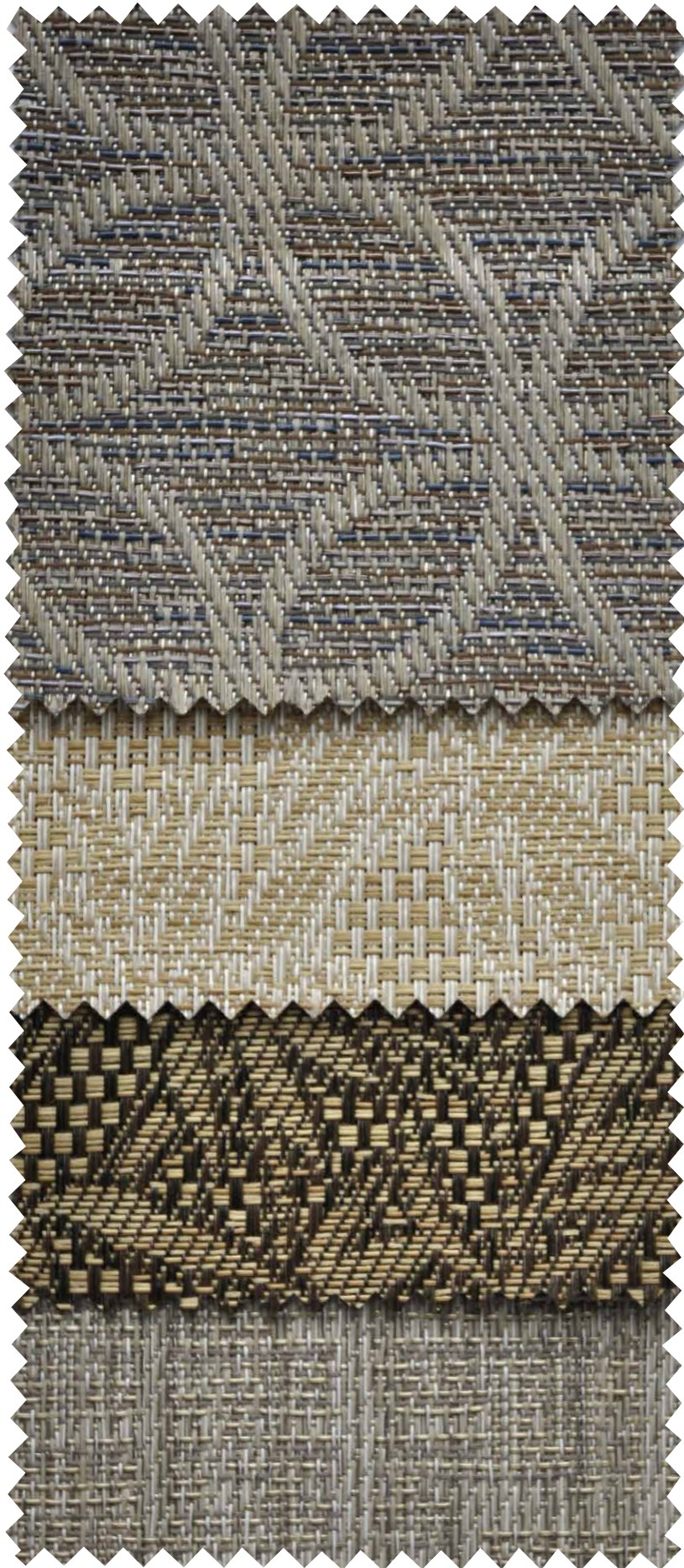


**PHIFERTEX<sup>®</sup>**  
*Outdoor Fabrics*



PVC / Olefin Blends  
Slingable Fabrics





Greer Indigo | LDG  
3034324 | Construction: 42x24



Natural Brush Forest Pebble | XHX  
3018446 | Construction: 42x24



Natural Brush Forest Abbey | BS8  
3018444 | Construction: 42x24



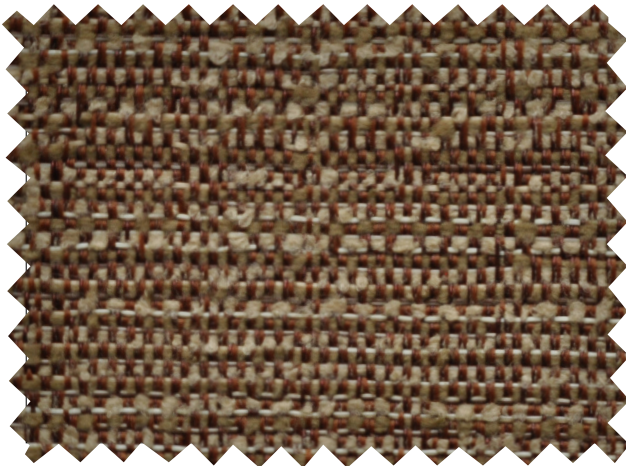
Double Cross Limestone | XZZ  
3029018 | Construction: 42x24



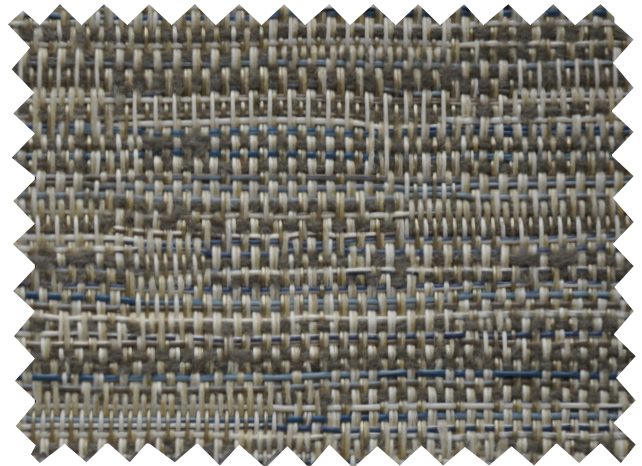
Mingle Pecan | EY3  
3029019 | Construction: 42x24 | with boucle



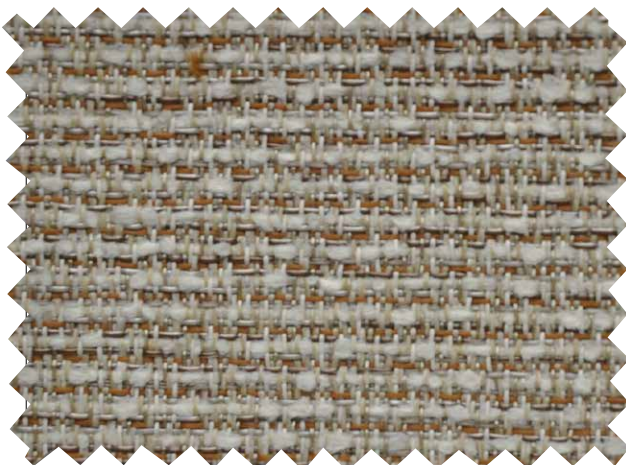
Hayden Hickory | NB6  
3030830 | Construction: 42x24 | with 2600



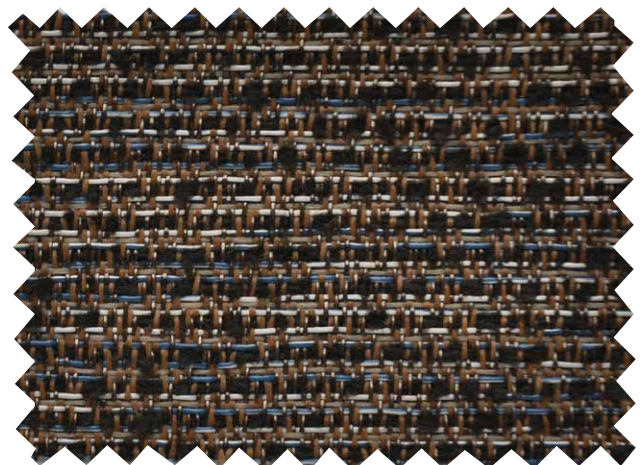
Dornick Cedar | KY2  
3034325 | Construction: 42x24 | with 2600



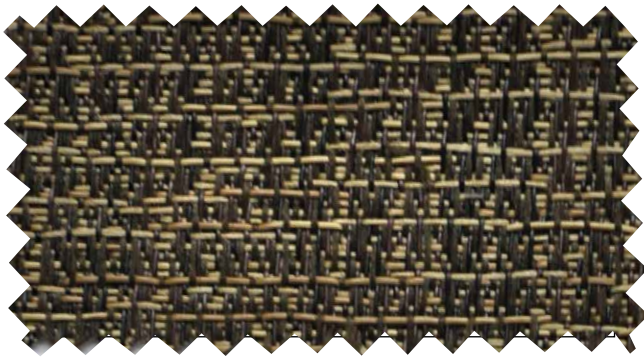
Vegas Blues | LEE  
3035589 | Construction: 42x20 | with 2600



NEW | Kipton Pebble | NW5  
3036884 | Construction: 42x24 | with 2600



Kipton Suede | NH1  
3032484 | Construction: 42x24 | with 2600



China Brush | BR9  
3018442 | Construction: 42x24



Crystal Linen Ash | NC4  
3030828 | Construction: 42x24



Laird Willow | DZ7  
3032485 | Construction: 42x24



Crystal Linen Java | NC3  
3030827 | Construction: 42x14



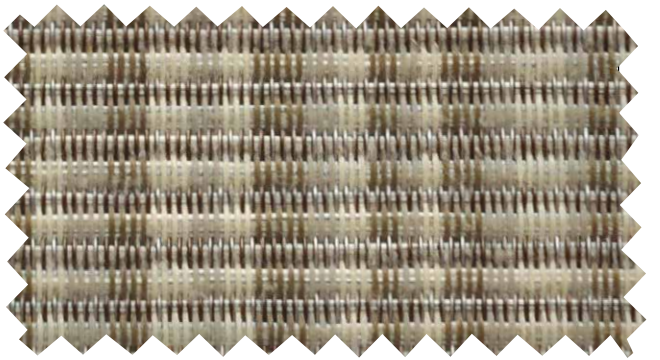
NEW | Catania Latte | NW4  
3036883 | Construction: 42x24



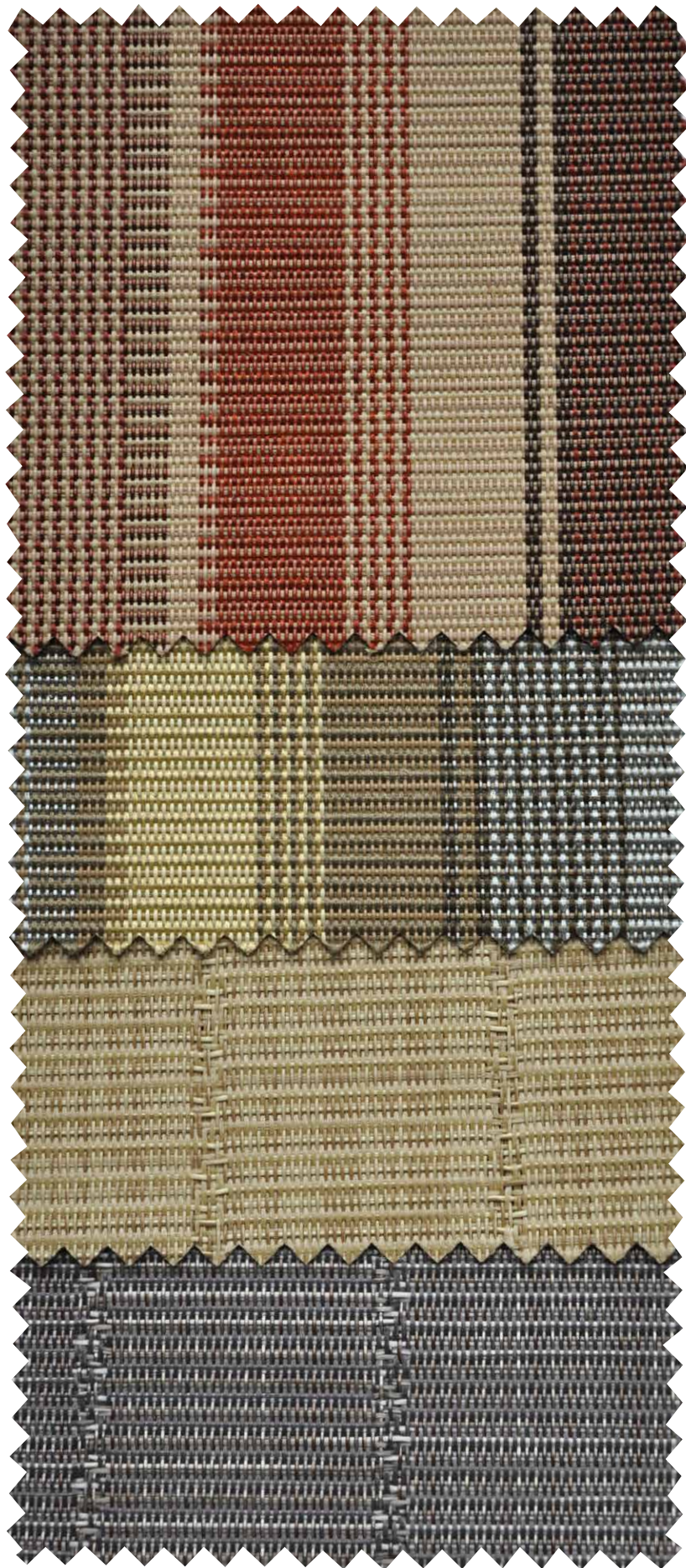
Patina Red | KW4  
3032481 | Construction: 42x24 | with 2600



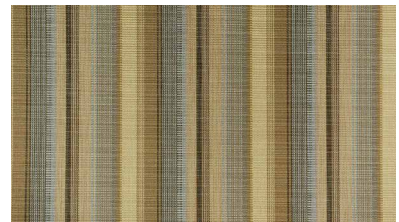
Weston Charcoal | XX5  
3027636 Construction: 42x24



Patina Stone | NG9  
3032483 | Construction: 42x24 | with 2600



Island Stripe Sienna | KQ4  
3025685 | Construction: 42x24



Chambray Stripe | BJ4  
3016031 | Construction: 42x24



Raffia Natural | BJ3  
3016029 | Construction: 42x22



NEW | Raffia Stripe Sable | YHL  
3036889 | Construction: 42x24

## FABRIC FEATURES

### DURABILITY/CLEANABILITY

Functional and durable, Phifertex fabrics offer excellent performance while withstanding spills, splatters and the hustle and bustle of high traffic areas. These fabrics are easy to maintain – easily cleaned with soap and water or 50/50 bleach to water solution.

### WARRANTY

Phifer offers a 3-year limited warranty for Phifertex Outdoor Fabrics. This warranty covers the fabric becoming non-functional due to loss of dimensional stability from exposure to conditions including sunlight, mildew, rot and normal atmospheric conditions. The warranty does not cover damage to the fabric from any source nor does it cover gradual fading or discoloration from atmospheric pollution or other debris. This warranty remains in effect for 3 years from the date of purchase. Phifer will provide new fabric, free of charge, to replace the non-functioning fabric. This warranty does not cover the cost of labor or other consequential or incidental expenses.



### GREENGUARD

GREENGUARD Certification ensures products have met some of the world's most rigorous and comprehensive standards for low emissions of volatile organic compounds (VOCs) into indoor air. Phifer was the first manufacturer in the outdoor fabric industry to achieve GREENGUARD certification. Certification is completely voluntary and ensures that the highest industry standards are being applied to maintain indoor air quality for the health and safety of building occupants.



### MICROBAN®

Phifertex fabrics are the only outdoor furniture fabrics in the world to include Microban protection. Microban antimicrobial protection works continuously to inhibit the growth of bacteria, mold and mildew that can cause stains, odors and product deterioration.



- Microban antimicrobial protection is infused into Phifertex fabrics for lasting protection that won't wash off or wear away for the lifetime of the product.
- Phifertex fabrics infused with Microban antimicrobial technology are ideal for any commercial or residential environment where microbes are a concern, including healthcare, hospitality, home, office, schools and institutions.



### FLAME RETARDANCE

- National Fire Protection Association, NFPA No. 101, "Life Safety Code", Class "A" rating. (Tested in accordance to ASTM E84-07, Surface Burning Characteristics of Building Material).
- California Technical Bulletin 117, Section E, Commercial Standard CS-191-53 (Classification 1).
- Federal Motor Vehicles Safety Standards, Section 571.302, Standard Number 302 (FMVSS 302),

