

# SOLTIS

99 & BV99



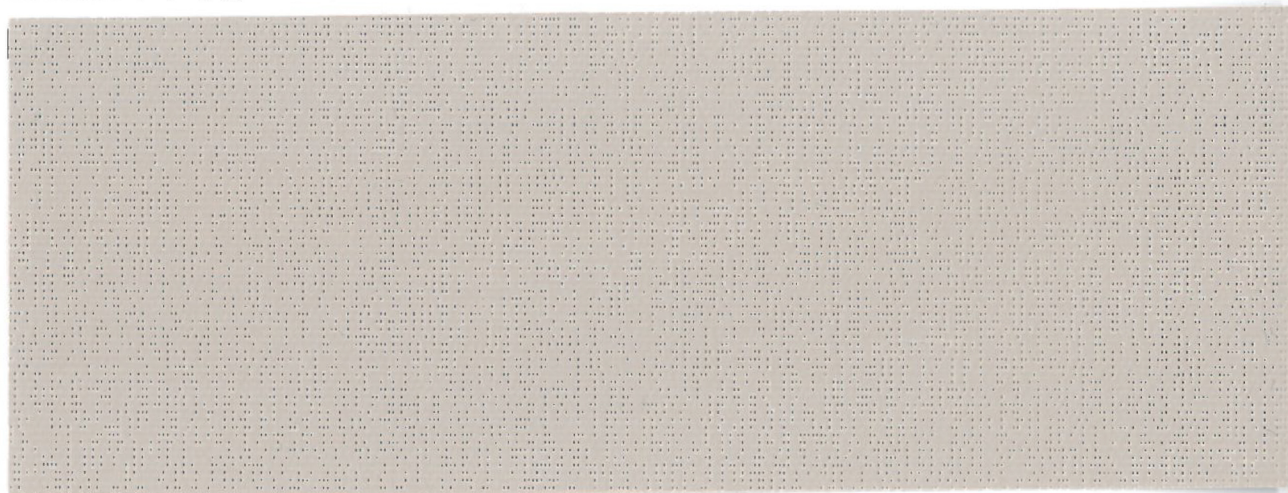
  
**Serge Ferrari**



# SOLTIS

99 & BV99

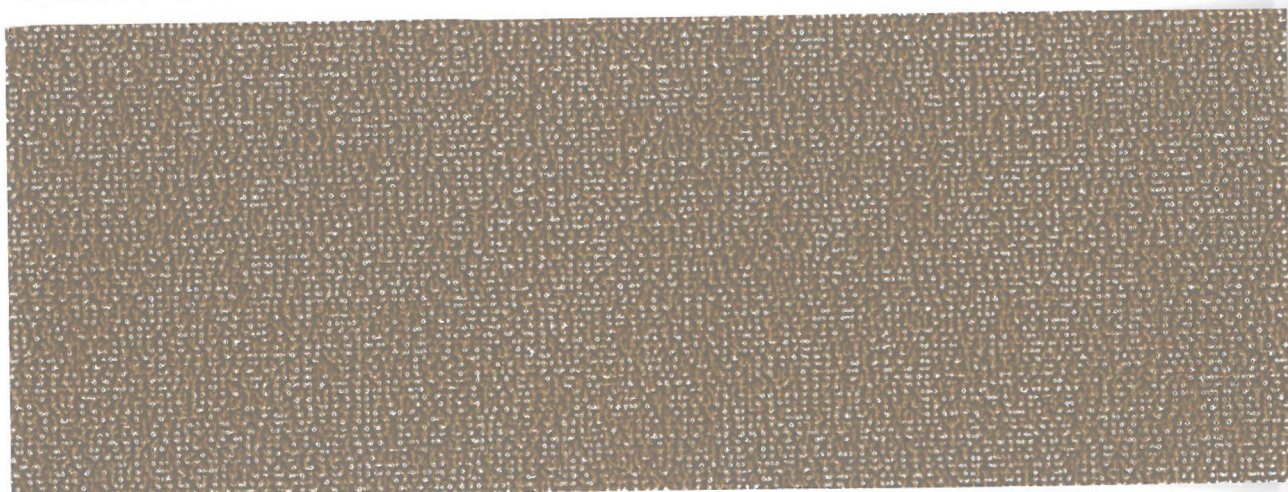
Color / Alu



Sandy beige

99-50286\*

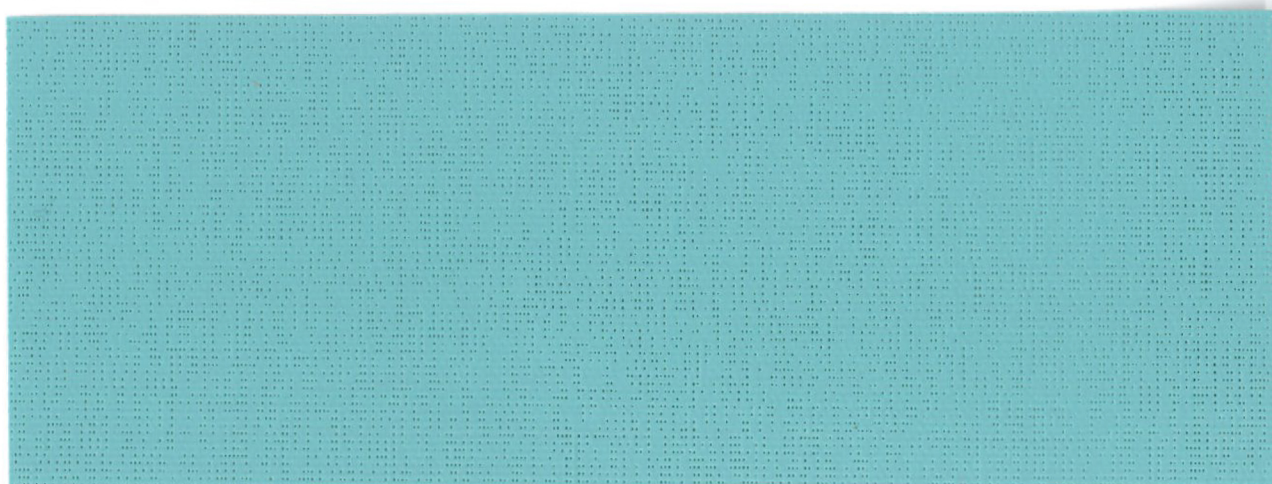
Color / White



Chestnut

99-50278

Color / Color

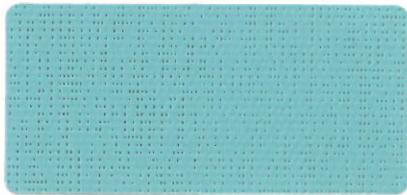


Bermuda

99-50306

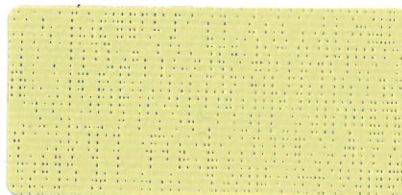


# Color / Alu



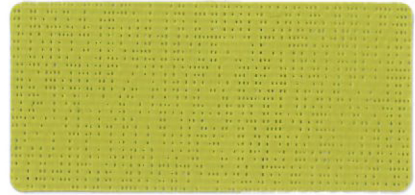
**Bermuda**

99-50300



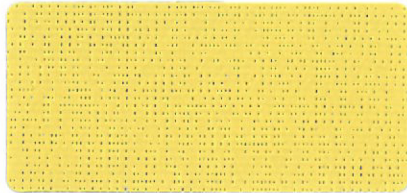
**Lotus**

99-50294



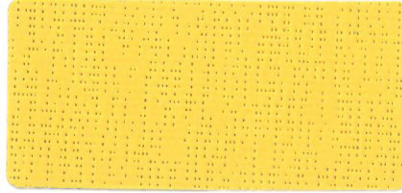
**Bamboo**

99-50295



**Zenith**

99-50291



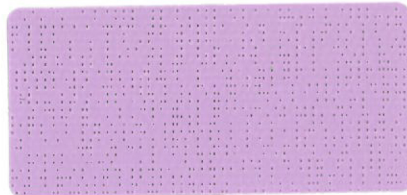
**Apricot**

99-50292



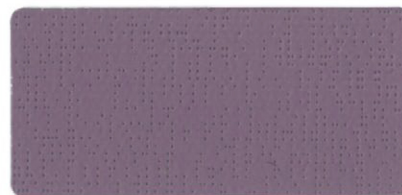
**Paprika**

99-50293



**Lilac**

99-50296



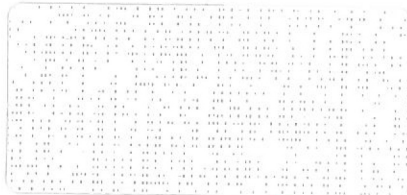
**Fig**

99-50297



**Plum**

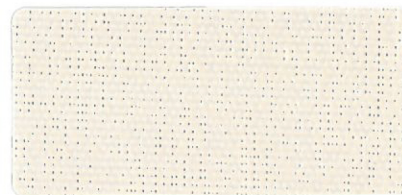
99-50298



**White**

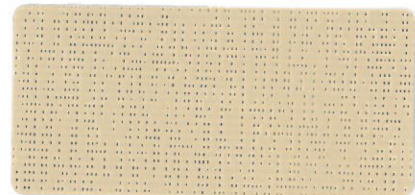


99-2055\*



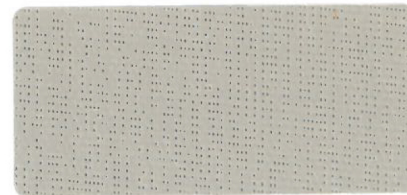
**Quartz**

99-50285\*



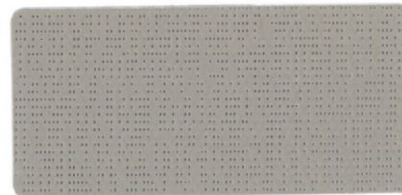
**Hemp**

99-50287



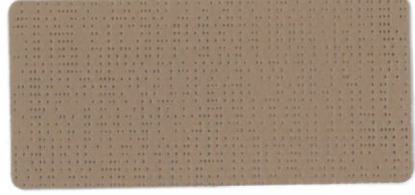
**Clay**

99-50288



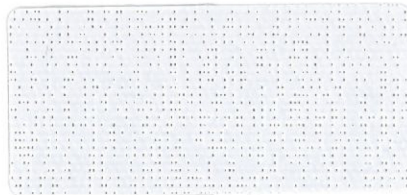
**Ash-brown**

99-50289



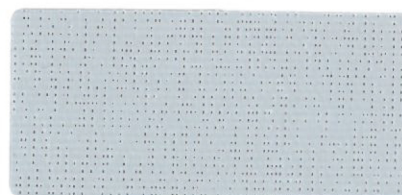
**Chestnut**

99-50290



**Spume**

99-50284



**Fjord**

99-50299



**Alu**



99-2059\*



**Light grey**



99-2058\*



**Medium grey**



99-2073



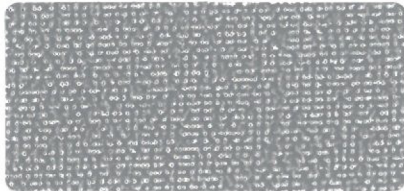
**Anthracite**



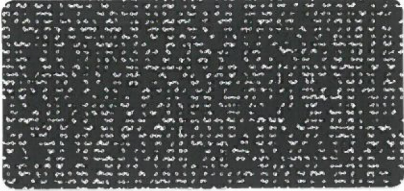
99-2068\*



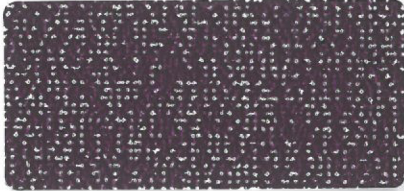
# Color / White



Medium grey 99-50279



Black 99-2115\*



Plum 99-50277

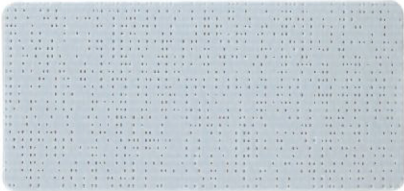
# Color / Color



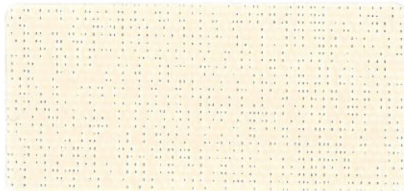
White 99-2044\*



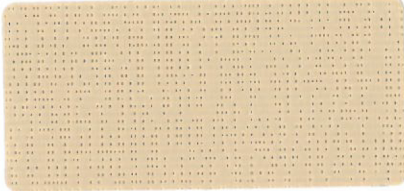
Spume 99-50301\*



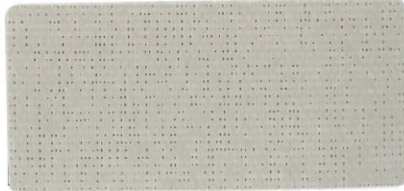
Fjord 99-50302



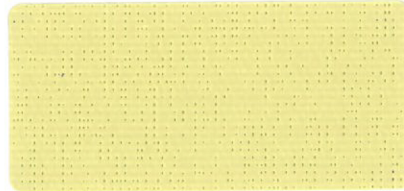
Quartz 99-50303\*



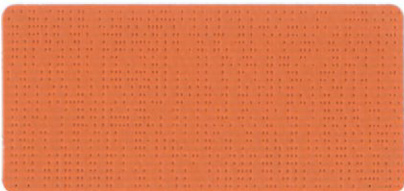
Hemp 99-50265



Clay 99-50305



Lotus 99-50307



Paprika 99-50308

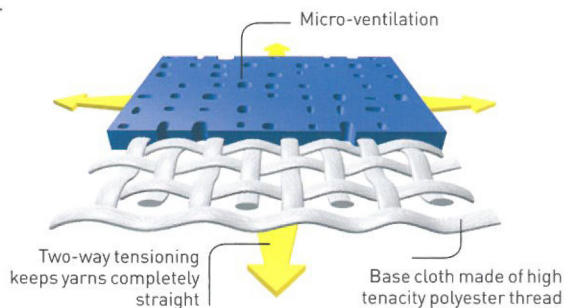
\*Also available in 105.1 inches width



# Exclusive Précontraint Serge Ferrari® technology



Patented worldwide, Précontraint Serge Ferrari® technology involves keeping the composite under tension throughout the manufacturing cycle.



## Strength characteristics

- Exceptional dimensional stability
- Long-term strength
- Greater coating thickness at the top of the yarns
- Exceptional flatness

## Benefits

- **No material deformation during installation or usage**
- **No elongation, tear resistant**
- **Long-term strength and aesthetic quality**
- **Thinness**
- **Smooth surface, easy upkeep**
- **Compactness, easy rolling**
- **No edge curling**

## NF Toiles certification

- The French "NF Toiles" label guarantees that Soltis 99 maintain a high level of quality and homogeneity.
- Certified references meet thermo-optical, strength and durability requirements stipulated for the "NF Toiles" label.
- Certification application pending for new colors (solar and light properties quoted provisionally).



## Matching colors SOLTIS 99

|             | Soltis 99 Color/Alu | Soltis 99 Color/White | Soltis 99 Color/Color | Soltis B99 Dim out |
|-------------|---------------------|-----------------------|-----------------------|--------------------|
| White       |                     |                       |                       |                    |
| Spume       |                     |                       |                       |                    |
| Light grey  |                     |                       |                       |                    |
| Medium grey |                     |                       |                       |                    |
| Anthracite  |                     |                       |                       |                    |
| Black       |                     |                       |                       |                    |
| Alu         |                     |                       |                       |                    |
| Quartz      |                     |                       |                       |                    |
| Hemp        |                     |                       |                       |                    |
| Sandy beige |                     |                       |                       |                    |
| Clay        |                     |                       |                       |                    |
| Ash-brown   |                     |                       |                       |                    |
| Chestnut    |                     |                       |                       |                    |
| Zenith      |                     |                       |                       |                    |
| Apricot     |                     |                       |                       |                    |
| Paprika     |                     |                       |                       |                    |
| Lotus       |                     |                       |                       |                    |
| Lilac       |                     |                       |                       |                    |
| Fig         |                     |                       |                       |                    |
| Plum        |                     |                       |                       |                    |
| Bamboo      |                     |                       |                       |                    |
| Bermuda     |                     |                       |                       |                    |
| Fjord       |                     |                       |                       |                    |

## Solar and light properties (EN 14501)

|                      | References  | TS | RS | AS | TV n-h | TV n-n | g <sub>tot</sub> |
|----------------------|-------------|----|----|----|--------|--------|------------------|
| <b>Color / Alu</b>   |             |    |    |    |        |        |                  |
|                      | 99-2055 A   | 13 | 48 | 39 | 12     | 3      | 0.41             |
|                      | 99-2055 B   | 13 | 65 | 22 | 12     | 3      | 0.35             |
|                      | 99-2058 A   | 9  | 44 | 47 | 8      | 4      | 0.42             |
|                      | 99-2058 B   | 9  | 42 | 49 | 8      | 4      | 0.43             |
|                      | 99-2059 A/B | 5  | 45 | 50 | 5      | 4      | 0.42             |
|                      | 99-2068 A   | 3  | 36 | 61 | 2      | 2      | 0.44             |
|                      | 99-2068 B   | 3  | 9  | 88 | 2      | 2      | 0.53             |
|                      | 99-2073 A   | 4  | 40 | 56 | 3      | 3      | 0.43             |
|                      | 99-2073 B   | 4  | 25 | 71 | 3      | 3      | 0.48             |
|                      | 99-50284 A  | 9  | 48 | 43 | 7      | 2      | 0.41             |
|                      | 99-50284 B  | 9  | 63 | 28 | 7      | 2      | 0.36             |
|                      | 99-50285 A  | 9  | 47 | 44 | 8      | 3      | 0.41             |
|                      | 99-50285 B  | 9  | 60 | 31 | 8      | 3      | 0.37             |
|                      | 99-50286 A  | 6  | 45 | 49 | 5      | 2      | 0.41             |
|                      | 99-50286 B  | 6  | 46 | 48 | 5      | 2      | 0.41             |
|                      | 99-50287 A  | 7  | 46 | 47 | 6      | 3      | 0.41             |
|                      | 99-50287 B  | 7  | 48 | 45 | 6      | 3      | 0.41             |
|                      | 99-50288 A  | 6  | 44 | 50 | 5      | 3      | 0.42             |
|                      | 99-50288 B  | 6  | 39 | 55 | 5      | 3      | 0.43             |
|                      | 99-50289 A  | 6  | 42 | 52 | 5      | 4      | 0.43             |
|                      | 99-50289 B  | 6  | 30 | 64 | 5      | 4      | 0.46             |
|                      | 99-50290 A  | 5  | 41 | 54 | 4      | 4      | 0.43             |
|                      | 99-50290 B  | 5  | 25 | 70 | 4      | 4      | 0.48             |
|                      | 99-50291 A  | 7  | 47 | 46 | 6      | 2      | 0.41             |
|                      | 99-50291 B  | 7  | 50 | 43 | 6      | 2      | 0.40             |
|                      | 99-50292 A  | 11 | 45 | 44 | 9      | 3      | 0.42             |
|                      | 99-50292 B  | 11 | 52 | 37 | 9      | 3      | 0.40             |
|                      | 99-50293 A  | 6  | 46 | 48 | 4      | 3      | 0.44             |
|                      | 99-50293 B  | 6  | 37 | 57 | 4      | 3      | 0.44             |
|                      | 99-50294 A  | 6  | 47 | 47 | 5      | 2      | 0.41             |
|                      | 99-50294 B  | 6  | 54 | 40 | 5      | 2      | 0.39             |
|                      | 99-50295 A  | 8  | 44 | 48 | 6      | 3      | 0.42             |
|                      | 99-50295 B  | 8  | 36 | 56 | 6      | 3      | 0.44             |
|                      | 99-50296 A  | 6  | 47 | 47 | 4      | 2      | 0.41             |
|                      | 99-50296 B  | 6  | 49 | 45 | 4      | 2      | 0.40             |
|                      | 99-50297 A  | 4  | 42 | 54 | 3      | 3      | 0.43             |
|                      | 99-50297 B  | 4  | 21 | 75 | 3      | 3      | 0.49             |
|                      | 99-50298 A  | 7  | 38 | 55 | 4      | 4      | 0.44             |
|                      | 99-50298 B  | 7  | 17 | 76 | 4      | 4      | 0.50             |
|                      | 99-50299 A  | 6  | 46 | 48 | 4      | 2      | 0.41             |
|                      | 99-50299 B  | 6  | 50 | 44 | 4      | 2      | 0.40             |
|                      | 99-50300 A  | 5  | 48 | 47 | 4      | 3      | 0.41             |
|                      | 99-50300 B  | 5  | 41 | 54 | 4      | 3      | 0.43             |
| <b>Color / White</b> |             |    |    |    |        |        |                  |
|                      | 99-2115 A*  | 7  | 63 | 30 | 6      | 2      | 0.36             |
|                      | 99-2115 B   | 7  | 12 | 81 | 6      | 2      | 0.52             |
|                      | 99-50277 A* | 11 | 70 | 19 | 4      | 3      | 0.34             |
|                      | 99-50277 B  | 11 | 33 | 56 | 4      | 3      | 0.46             |
|                      | 99-50278 A* | 10 | 67 | 23 | 7      | 2      | 0.35             |
|                      | 99-50278 B  | 10 | 26 | 64 | 7      | 2      | 0.48             |
|                      | 99-50279 A* | 11 | 67 | 22 | 8      | 2      | 0.35             |
|                      | 99-50279 B  | 11 | 27 | 62 | 8      | 2      | 0.47             |
| <b>Color / Color</b> |             |    |    |    |        |        |                  |
|                      | 99-2044     | 21 | 71 | 8  | 20     | 2      | 0.34             |
|                      | 99-50265    | 15 | 48 | 37 | 11     | 4      | 0.41             |
|                      | 99-50301    | 20 | 63 | 17 | 15     | 3      | 0.36             |
|                      | 99-50302    | 13 | 48 | 39 | 8      | 3      | 0.41             |
|                      | 99-50303    | 19 | 62 | 19 | 13     | 2      | 0.37             |
|                      | 99-50305    | 9  | 39 | 52 | 6      | 3      | 0.43             |
|                      | 99-50306    | 12 | 41 | 47 | 7      | 3      | 0.43             |
|                      | 99-50307    | 18 | 56 | 26 | 13     | 2      | 0.39             |
|                      | 99-50308    | 15 | 36 | 49 | 6      | 3      | 0.45             |

**TS:** Solar Transmission (%)  
**RS:** Solar Reflection (%)  
**AS:** Solar Absorption (%)  
**TS + RS + AS = 100%** of incident energy

**g<sub>tot</sub>:** Internal Solar Factor  
 Type "C" glazing: insulating, slightly emissive double glazing in position 3 (4 + 16 + 4; argon-filled) - g=0.59 - U=1.2.

**TV n-h:** Normal-hemispherical visible light transmission (%)

**TV n-n:** Normal-normal visible light transmission (%)

**A:** Aluminium face exposed to the sun  
**B:** Colored face exposed to the sun

**A\*:** White face exposed to the sun

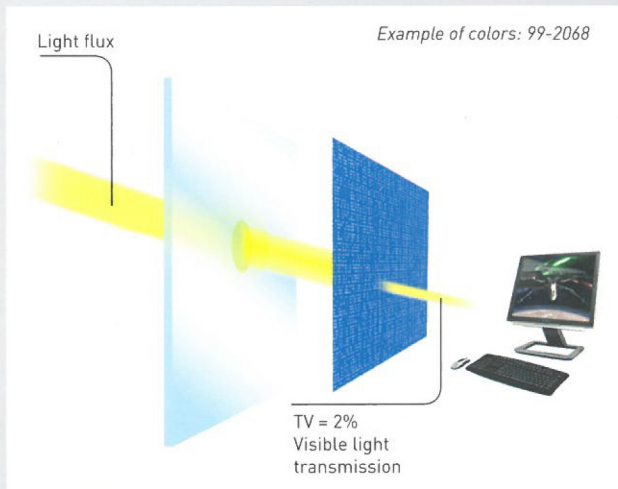


## MAIN FEATURES

- Light and glare control
- Excellent thermal protection
- Smoother and thinner
- Wide range of matching colors
- Lightweight, durable and 100% recyclable

## APPLICATIONS

- Interior shades
- Vertical blinds
- Ideal for horizontal skylights



Aluminium backing perfectly controls light flux



White back side: combining thermal and visual performance



Color both side version: effective, design and aesthetics

## Combatting dazzle

Aluminium-backed Soltis 99 offers maximum visual comfort to people working on a computer:

- its metallised side diffuses the light uniformly,
- its cleverly balanced fabric openings
  - > block the light flux,
  - > reduce glare,
  - > conserve the natural light.

## Optimizing comfort

The exclusive white-backed Soltis 99 solution meets both thermal and visual comfort requirements

- Its colored side guarantees excellent outward visibility.
- Its highly reflective white side protects occupants from heat.

## Highlighting design

Offered in a 2-colored side Soltis 99 version:

- filters both heat and light,
- combines with other Serge Ferrari ranges suitable for solar protection or interior design applications,
- ensures perfectly aesthetic integration into its environment.



# SOLTIS

## 99 & BV99

| Technical properties                                 | Soltis 99  | Soltis BV99         | Standards     |
|--|--|---------------------|---------------|
| Weight   | 8.5 oz/sqyd  | 8.5 oz/sqyd         | EN ISO 2286-2 |
| Thickness  | 320 microns  | 320 microns         |               |
| Width  | 69.7 inches - 105.1 inches   | 5 inches *          |               |
| <b>Length of rolls</b>                               |  |                     |               |
| Standard format length in 69.7 in                    | 54.68 yds  | 54.68 yds           |               |
| Standard format length in 105.1 in                   | 43.74 yds  | -                   |               |
| <b>Physical properties</b>                           |  |                     |               |
| Tensile strength (warp/weft)                         | 160/170 daN/ 5 cm  | 160/170 daN/ 5 cm   | EN ISO 1421   |
| Tear strength (warp/weft)                            | 11/13 daN  | 11/13 daN           | DIN 53.363    |
| Fungistatic treatment                                | Degree 0, excellent  | Degree 0, excellent | EN ISO 846-A  |
| <b>Flame retardancy</b>                              |  |                     |               |
| Rating   | <b>Method 1 and 2/NFPA 701 • CSFM T19 • Class A/ASTM E84 • B1/DIN 4102-1 • BS 7837 • BS 5867 • Schwerbrennbar-Q1-Tr1/ONORM A 3800-1 • M1/UNE 23.727-90 • VKF 5.2/SN 198898 • 1530.3/AS/NZS • G1/GOST 30244-94 • Classe 1 / UNI 9177-87 • CAN ULCS109</b> |                     |               |
| Euroclass  | <b>B-s2,d0/EN 13501-1</b>  |                     |               |
| <b>Management systems</b>                            |  |                     |               |
| for Quality  | ISO 9001   |                     |               |
| <b>Certifications, labels, guarantees, recycling</b> |  |                     |               |



\* Please consult us for any special request.

The technical data above are average values subject to a +/- 5% tolerance.

The buyer of our products is fully responsible for their application and transformation with respect to any possible third party. The buyer of our products is responsible for their implementation and installation in compliance with standards, codes of practice and safety regulations in force in destination countries. For information on our contractual warranty, please refer to the relevant terms and conditions.

The values quoted above represent results of tests performed in compliance with common design practices and are provided for information only to enable customers to make the best use of our products. Our products are subject to changes based on technical advances and we reserve the right to modify their characteristics at any time. The buyer of our products is responsible for checking the validity of the above data.

### TOOLS AND SERVICES

- ACV and FDES (Health and Environmental Datasheet) available on request
- Personalised service for simulating your project's thermal performance and related Soltis solar protection systems: please contact your Serge Ferrari representative
- Tool for evaluating energy savings generated by Soltis solar protection systems: [www.textinergie.org](http://www.textinergie.org)
- Document and photo libraries: [www.sergeferrari.com](http://www.sergeferrari.com)

#### → Contact

- Headquarters:  
+ 33 (0)4 74 97 41 33
- Your local representative:  
[www.sergeferrari.com](http://www.sergeferrari.com)

#### → TEXYLOOP®

- The Serge Ferrari operational recycling chain
- Secondary raw materials of high intrinsic value compatible with multiple processes
- A quantified response to combat depletion of natural resources

[www.texyloop.com](http://www.texyloop.com)

[www.sergeferrari.com](http://www.sergeferrari.com)